

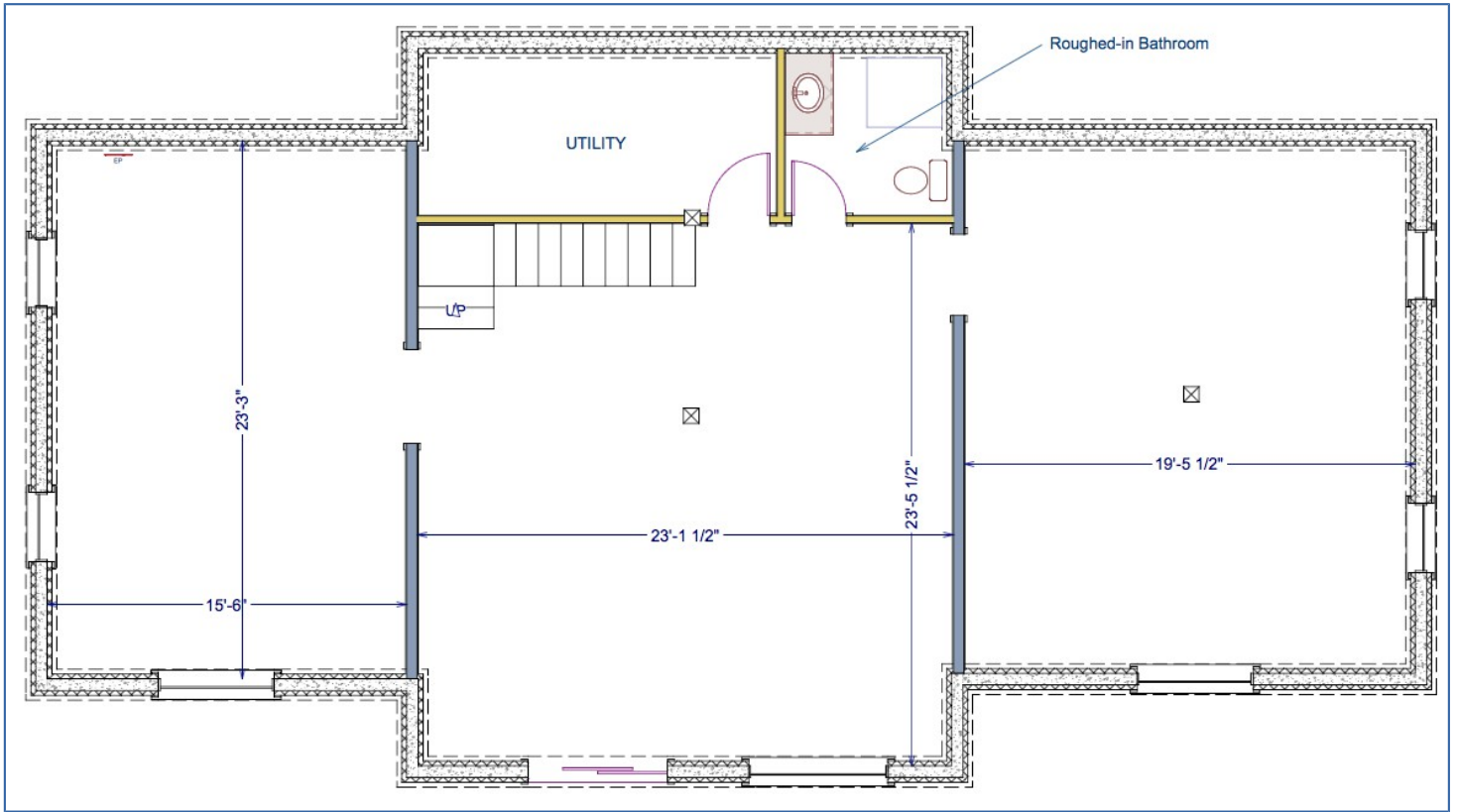
Lot 5: Wing Shaped Ecolog Home



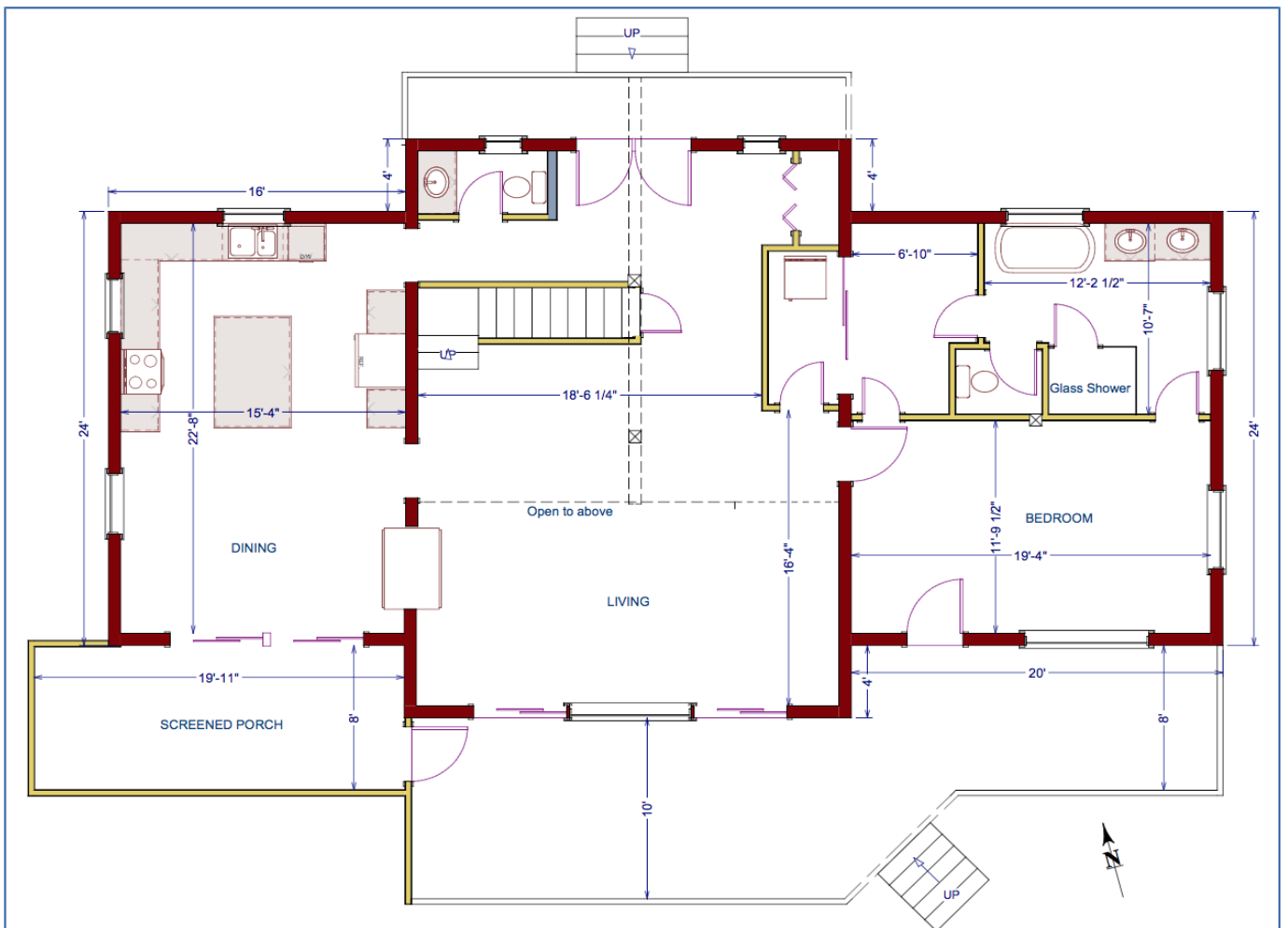
3D rendering of front view

Key features of this amazing home are:

- 2,500 square feet finished space on main level and loft
- 4 Bedrooms, 2 ½ bathrooms
- 1,500 square feet 8' high finished basement, plumbing for bathroom roughed in
- Screened porch with lake view
- Double sided gas fireplace between living room and dining room, stone face on living room side
- Spacious master bedroom with luxurious ensuite on main level
- Big living room with open ceiling
- In floor heating in basement slab, propane based force air heating on main floor and loft
- Additional gas stove in basement is perfect as emergency heat during power outage
- drilled well
- energy efficient design guarantees low propane and Hydro bills
- 10'x10' deck at the beginning of the sandy beach
- Hardwood floor on main level and loft
- Tasteful tiles in bathrooms and entrance area
- high end custom kitchen with quartz countertops, gas stove and high end appliances
- high end custom bathroom vanities with quartz countertops
- high end casement windows
- long lasting metal roof
- 2 car garage on concrete slab with metal roof
- look of garage matches look of house



Basement floor plan Lot 5



Main floor plan Lot 5



3D rendering of possible look of living room



